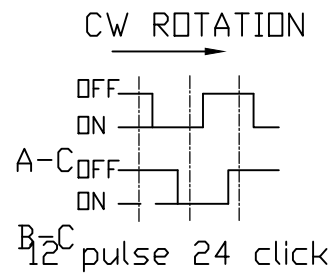
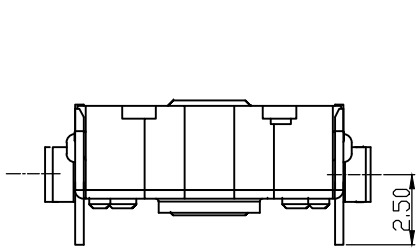


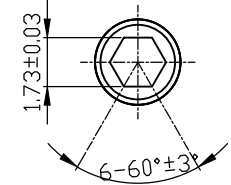
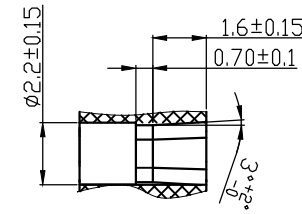
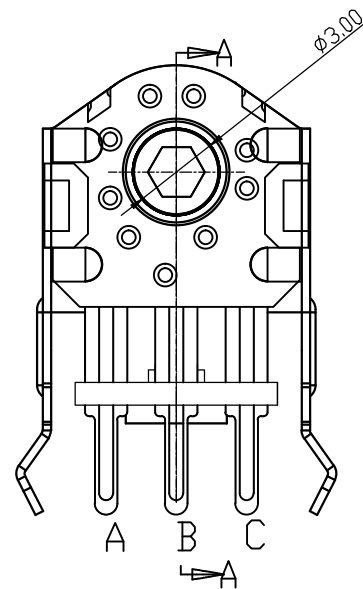
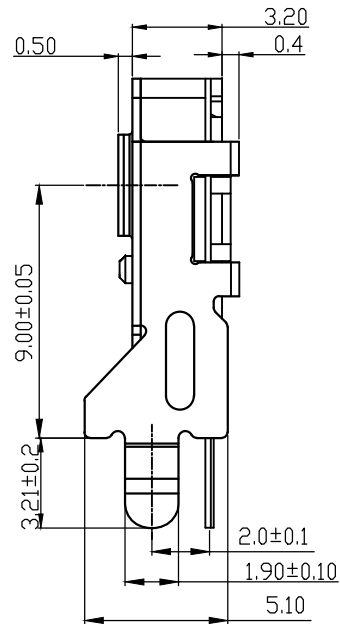
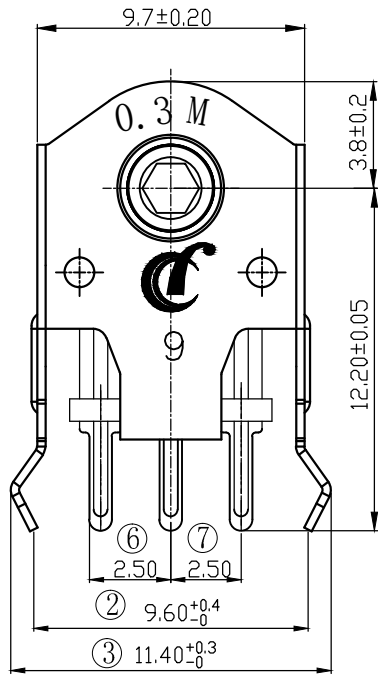
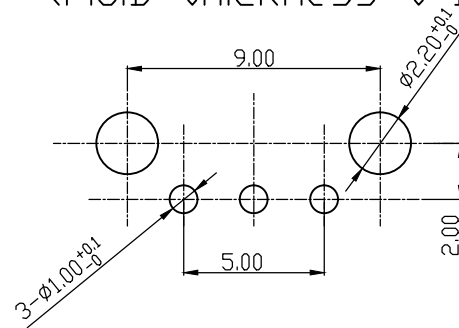
1. Material list

ITEM	DESCRIPTION	MATERIAL
1	Cover	SPCC
2	Anchop rlate	SUS301
3	Wheel gear	PDM
4	Spring	C5191
5	Base	PA66
6	Terminal	C2680

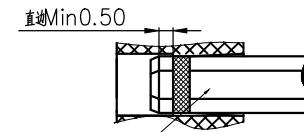
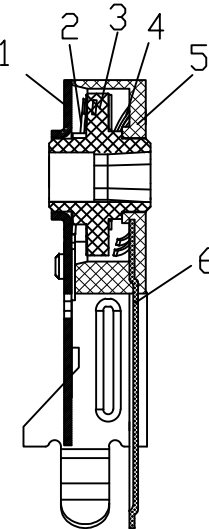
Rating	5VDC 1mA
Contact Resistance	500m $\Omega$ Max
Insulation Resistance	50M $\Omega$ Min
Dielectric Voltage	50VAC 60 $\pm$ 5S
Endurance	300,000 cycles
Rotational Force	20 $\pm$ 6 gf.cm



(Tolerance:  $\pm 0.1$ )  
(P.C.B thickness  $t=1.6$ )



六角孔相关尺寸



六角柱建议尺寸 1.73-1.76

直轴配合建议尺寸

不建议客户使用上图蘑菇头轴